

Morgan Wills

But, what if...?

9 November –
13 December 2019



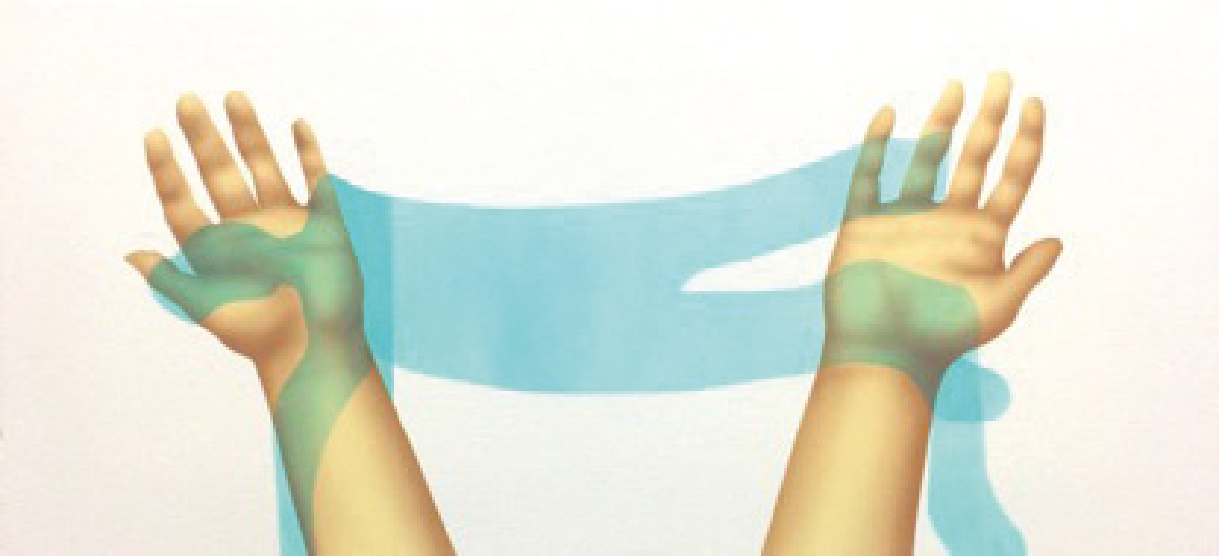
Private View
Friday 8th November
6–8pm



Listeners, 2019
Oil on canvas
51 × 61 cm
£1,200



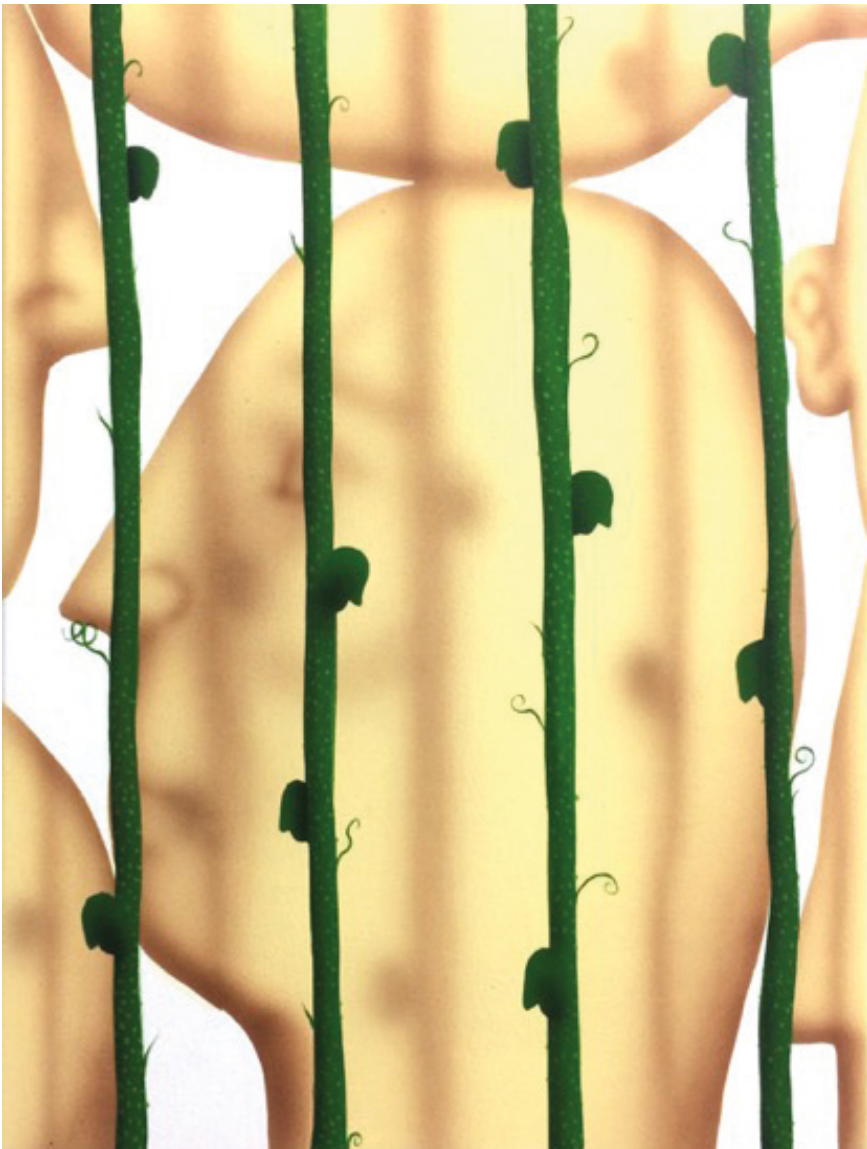
Whisper, 2019
Oil on canvas
28 × 36 cm
£700



Cradle, 2019
Acrylic on canvas
35 x 75 cm
£1,200



Stretch, 2019
Acrylic on canvas
35 x 75 cm
£1,200



Vines, 2019
Acrylic on canvas
56 × 61 cm
£1,200



Handful, 2019
Acrylic on canvas
100 × 120 cm
£2,400



In Grass, 2019
Acrylic on canvas
107 × 92 cm
£2,200



Pebblehead, 2018
Acrylic and oil on canvas
62 × 77 cm
£1,500



Feet, 2018
Oil on canvas
51 × 61 cm
£1,200



Untitled, 2018
Acrylic and oil on canvas
51 x 61 cm
£1,200



Damp Grass, 2019
Acrylic on wood
74 x 31 x 15 cm
£900



Time, 2019
Acrylic on wood
92 × 21 × 19 cm
£900



Light plant / Janiform, 2019
Acrylic on wood
69.5 × 24.5 × 22 cm
£900

Press Release

Morgan Wills
But, what if...?

9 November – 13 December 2019
Private view on Friday 8 November

‘Paul Valéry once said that a bad poem is one that vanishes into meaning. In a painting in which this is a room, this is a chair, this is a head, the imagery does not exist – it vanishes into recognition.’
– Philip Guston

For the artists’ second solo exhibition, Sid Motion Gallery is pleased to present new sculptural works and paintings by Morgan Wills.

The bright colours and bold forms used in these new works are seemingly light and amusing at first glance – but through the artists’ employment of repetition, gesture and of the absurd Wills manages to address existential anxieties inherent to the human condition and alludes to the anxieties in the creative process itself.

Morgan Wills (b. 1992) studied Painting at Wimbledon College of Art, graduating in 2014. His previous exhibitions include: ‘12 Conversations’, and ‘Play on Repeat’, Sid Motion Gallery, London, 2016 and 2018; ‘Wisdom Tooth’ Unit1 Gallery/Workshop, London, 2017 (following a three-month studio residency); ‘John Moores Painting Prize’, Walker Art Gallery, Liverpool, 2018; ‘Sorry About Last Night’, The Washington, Sheffield; ‘Versions’, Benevolent Association of Excellent Solutions (BAES), London; ‘Bloomberg New Contemporaries’, 2015, ICA, London and Backlit Gallery, Nottingham; ‘MK Open’, MK gallery, Milton Keynes, and ‘Assembly’ at Triangle Gallery, London. Wills work was included in the group show ‘Hyper Mesh’, at Assembly Point in January, and a selection of his new monochromatic paintings were shown at Sunday Art Fair in October.